



Chewing pests

1. White butterfly caterpillars eat holes in plant leaves. Commonly found on brassicas.



2. Snails feed and damage a large number of vegetables and ornamental plants.



3. Leafrollers feed on leaves, fruit and shoots of plants. They roll up leaves leaving silky webbing.



4. Cabbage tree moth caterpillars chew on the edge of leaves.



5. Leaf miners burrow into leaves cause tunnels along the leaf.

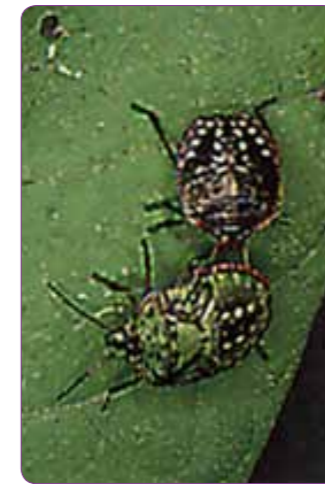


Sucking pests

6. Thrips suck the sap from leaves and can cause them to go silvery.



7. Whiteflies feed on the underside of leaves and produces honeydew. Sooty mould grows on this.



8. Shield or vegetable bugs pierce and suck plants. They can leave holes in fruit.



9. There are many types of scale. They push their mouthparts into the plant. This leads to poor and distorted plant growth.



10. Leafhoppers can cause leaves to become mottled.



11. Nematodes attack stem, leaves and under ground parts. This can slow down the uptake of water and nutrients.

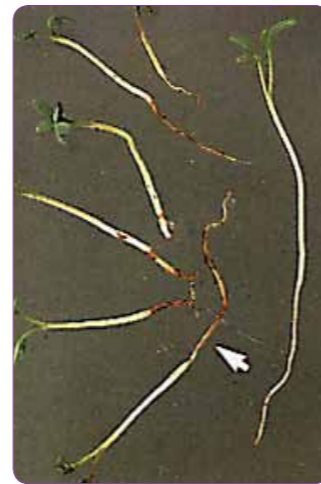


Fungal disease

12. Rust on poplar leaves.



13. Late blight causes green/brown patches on the leaf of potatoes.



14. Damping off causes roots and stems of seedlings to rot.



15. Botrytis or grey mould will cause stems to collapse. This disease can also infect fruit.



16. Phytophthora is a root disease which causes the plants to wilt.



17. Powdery mildew is a common disease on pumpkins, melons and various fruits. It covers the leaf and stems in a grey white fungus.



18. Peach leaf curl infects peach leaves causing them to become distorted.



Bacterial diseases

19. Leaf and black spot forms spots on the leaves of plants.



20. Fireblight causes plants leave and stems to dieback and wither.



Viral diseases

21. Daphne virus causes distortion and leaf mottling of leaves.



22. Rose virus shows up as a lined pattern on leaves.



Predators, parasites and diseases of pests

23. Lacewing larva preying on aphid.



Sucking Pests

24. White butterfly pupa about to be parasitised by pteromalus. The wasp will lay its eggs on the pupa.



25. A cicada infected by a fungal disease.